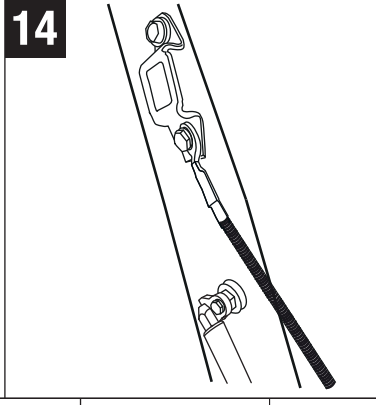
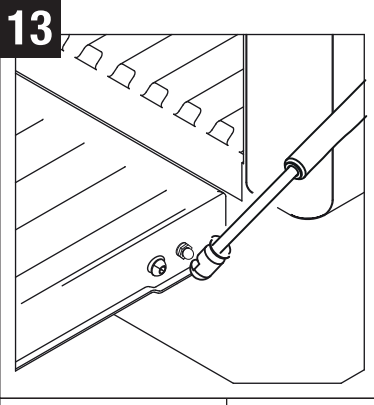
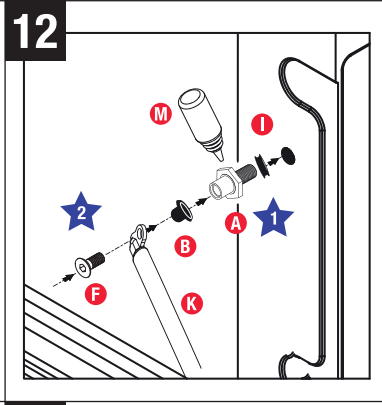
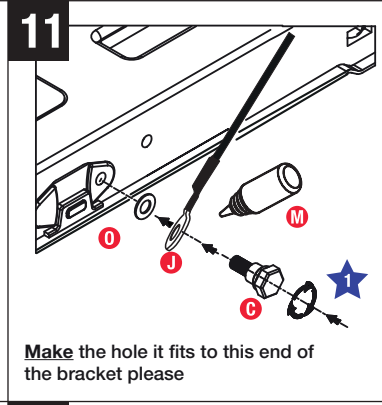
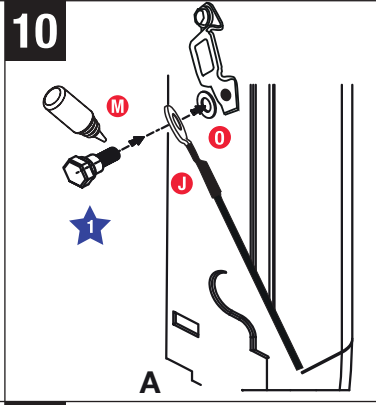
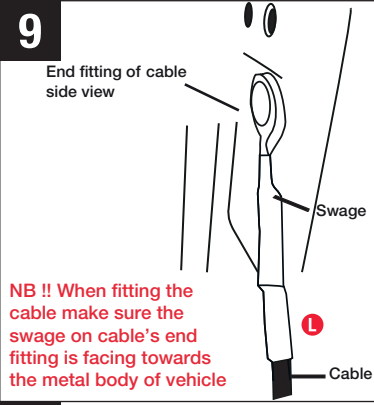
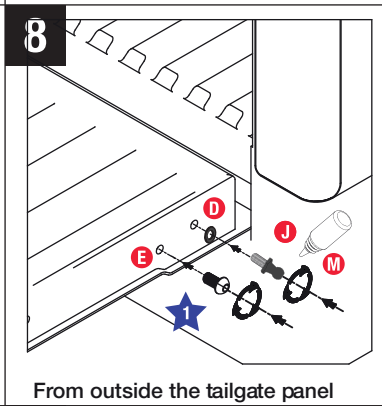
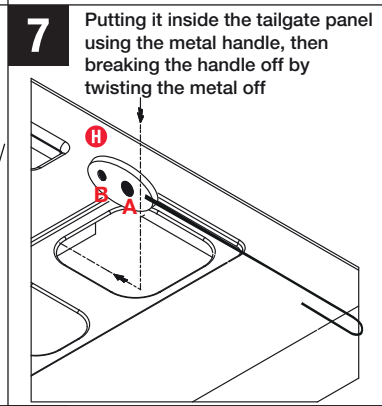
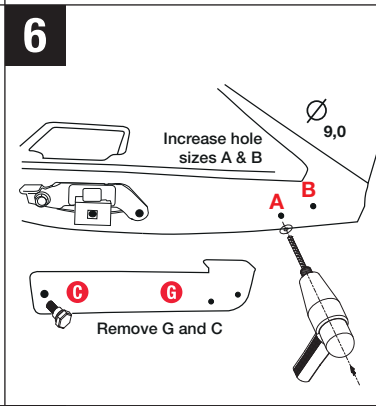
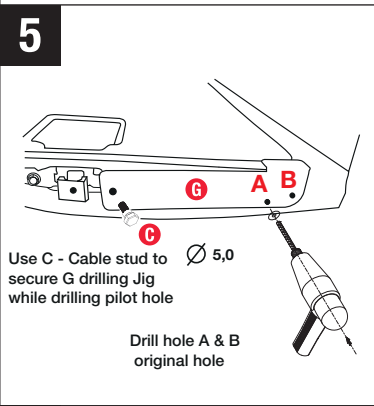
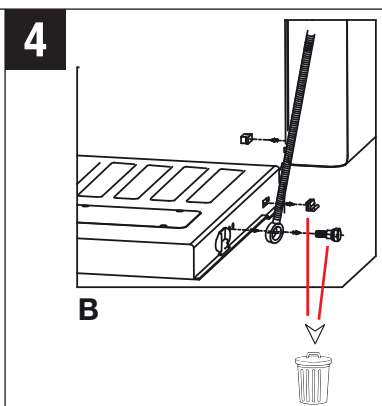
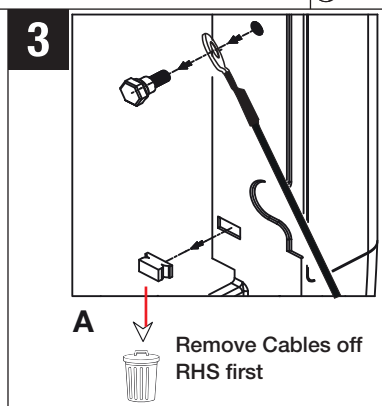
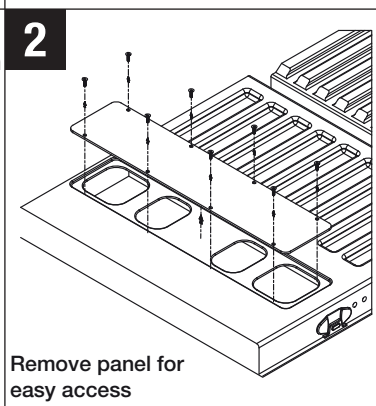


**EZDown Instruction** **MERCEDES BENZ X CLASS ED0710**

**1** RHS and LHS are determined when sitting in the Drivers side of the Vehicle.

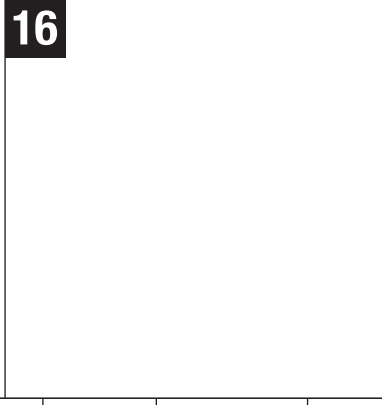
Recommended to use rust inhibitor where drilled.

**Fit RHS Kit first** from step 2 -14 with RHS Cable and then repeat on LHS with LHS cable. Steps 3 + 5 + 13. (B image).



**15**

Ensure Cables are taking Tailgate Load and NOT the Damper.



FITTING CODE	MANUFACTURER	MODEL TYPE	YEAR	STOCKIST	PRODUCT	REVISION	LABOUR	DATE	PAGE
ED0710	MERCEDES	X CLASS	2016 onwards	GENERAL USE	EZDOWN	1	20min	23/01/2018	1
TORQUE - N.m	★ 17.5N.m±2.7N.m		★	17.5N.m±2.7N.m				www.ezdown.co.za	

**NB:** After installation please close tailgate gently to ensure that there is no interference with any hardware.

**IMPORTANT:** No liability will be incurred by Industrial Specialised Applications company, for injury, death, or property damage caused by a product which has been set up, operated, and/or installed contrary to EZDown installation guide/manual, or which has been subjected to misuse, negligence, or accident, or which has been repaired or altered by anyone other than Industrial Specialised Applications, or which has been used in a manner or for a purpose for which the product was not designed.

