

SKF Technical Bulletin

VKBA 3497 – Fitting Instructions



RENAULT Espace III, Avantime III



Fitting instructions: Caution when mounting the Wheel bearing kit VKBA 3497



OE Nb: 60 25 370 612

SKF use safe packaging solutions to protect the wheel bearing from damage during transport or mounting. VKBA 3497 is delivered with a plastic joining sleeve, to keep the inner rings together, until the bearing is mounted on the car.



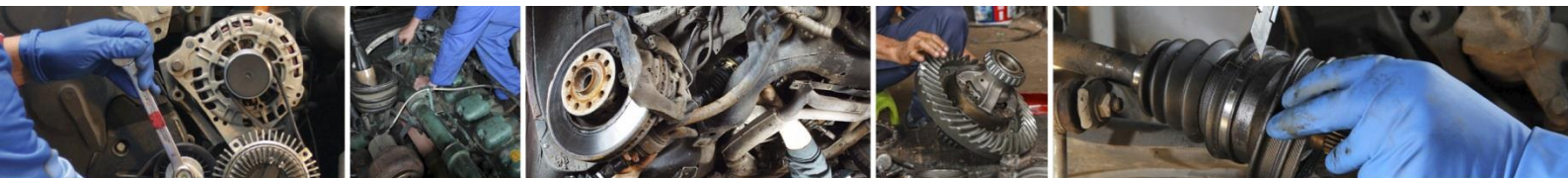
Bearing with plastic joining sleeve



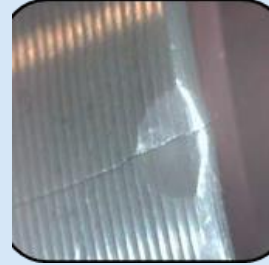
The plastic joining sleeve ring will be automatically pushed out by the axle stub, when mounting the bearing in a correct way, applying the force on the inner ring. Do not push out the plastic sleeve manually before mounting.



- Never remove plastic sleeve before mounting the bearing, as this will separate the inner rings.
- Always use correct mounting tools
- Apply the correct force on the bearing inner ring



VKBA 3497 – Troubleshooting



Likely causes

- Wrong tools used
- Wrong mounting
- Wrong applied force

Consequences

- Bearing inner rings could be separated, despite the plastic secure ring
- Bearing outer rings can move out of the bearing due to the press fit, when the shaft gets pushed through the inner ring
- The balls and raceways will get damaged as the mounting force is transmitted through the balls and raceways.
- Premature bearing failure/damage (due to water ingress....)

Solution

- Use correct tools for a proper mounting
- Apply correct force

VKBA 3497



 [Click here to watch SKF technical videos on Youtube!](#)

© SKF Group 2016

The contents of this publication are the copyright of the publisher and may not be reproduced (even extracts) unless written permission is granted. Every care has been taken to ensure the accuracy of the information contained in this publication but no liability can be accepted for any loss or damage whether direct, indirect or consequential arising out of the use

